

Extensible connecting duct with metal sleeves

RE-Flex DRASUTEN®



Uses

Handy connection between ventilation unit and ducting.
Swedish Type Approval Certificate No. 3439/83.

Design

Drasuten is made of corrugated, seamed aluminium band and can easily be extended, bent and compressed again. Similar construction as RE-Flex Compact, but Drasuten is fitted with a metal sleeve at both ends. Can also be made with nipple upon request.

Max. temperature: +200°C.

Standard length: 0,25 m extensible to 0,5 m.
Standard length: 0,35 m extensible to 1,0 m.
Standard length: 0,55 m extensible to 1,5 m.

Dimensions / Bending radius

Inner Ø mm	Inner bending radius, mm
80	48
100	60
125	75
160	96
200	160
250	200
315	250

When ordering, please state:

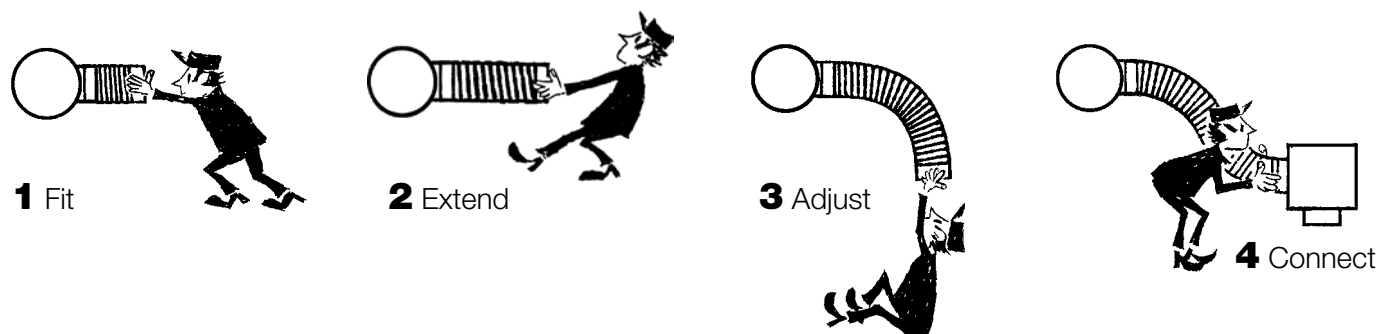
Extensible conn. duct DRASUTEN - 125

Product

Dimension

Extensible connecting duct

How to install



Pressure drop diagram, straight ducts

