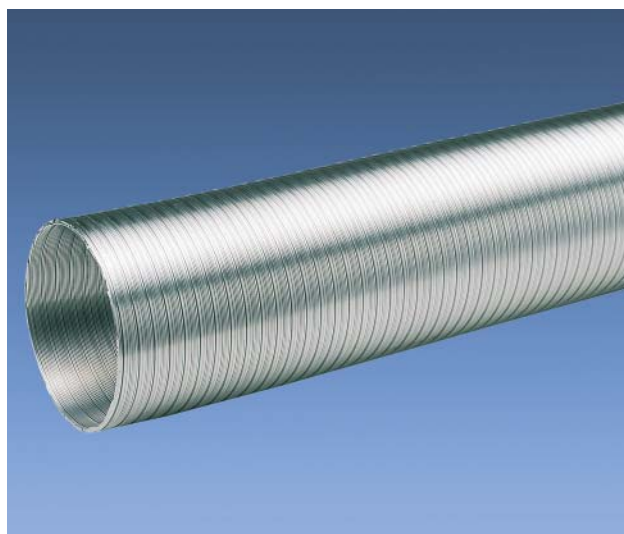


# RE-Flex COMPACT 2000

**Extensible aluminium duct**



## Uses

Compact 2000 is mainly designed to be a flexible connection between ventilation unit and ducting. Swedish Type Approval Certificate No. 3439/83.

## Design

The duct is made of corrugated, seamed aluminium band and can easily be extended, bent and compressed again.

## Max. temperature

+200° C.

## Standard length

0,75 m extensible to 3 m.  
(0,75 m = delivery length)

Inner diameter mm	Inner bending radius mm
80	48
100	60
125	75
160	96
200	160
250	200
315	250

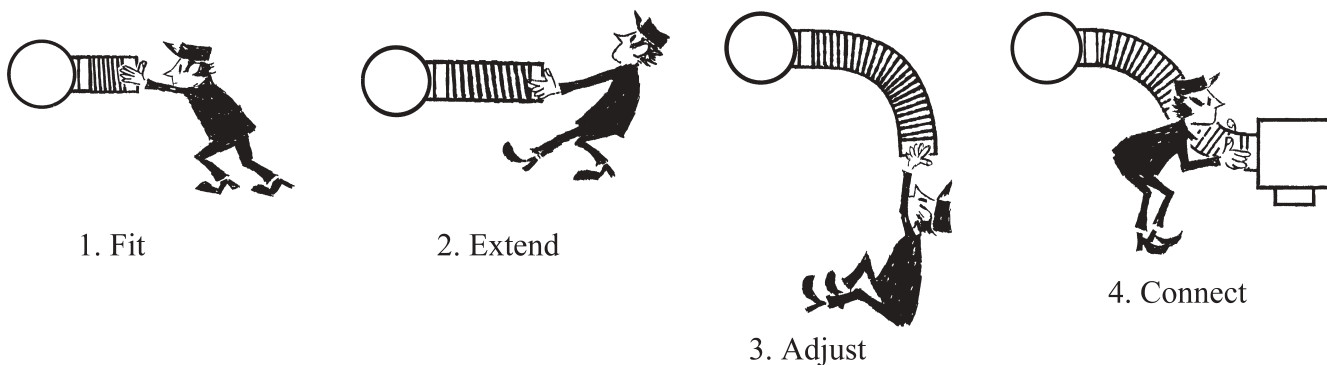
## When ordering, please state:

Art. No.  Compact 2000 - 125

Product

Dimension

# How to install



# Pressure drop diagram, straight ducts

