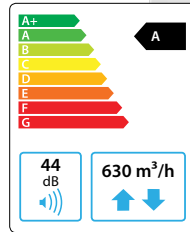


# Domekt R 500 V

Maximal air flow, m <sup>3</sup> /h	630
Panel thickness, mm	50
Unit weight, kg	113
Supply voltage, V	1~230
Maximal operating current, A	HE 7,3
Thermal efficiency of heat recovery, %	85
Reference flow rate, m <sup>3</sup> /s	0,123
Reference pressure difference, Pa	50
SPI, W/(m <sup>3</sup> /h)	0,35
Filters dimensions BxHxL, mm	540x260x46
Electric power input of the fan drive at reference flow rate, W	77
Electric power input of the fan drive at maximum flow rate, W	144
Electric air heater capacity, kW / Δt, °C	1 / 6,3
Control panel	C6.1 / C6.2
Maintenance space, mm	1050



The photo is intended for informational purposes only. exact details may vary.



## Acoustic data

A-weighted sound power level  $L_{WA}$ , dB(A) at reference flow rate

Supply inlet	57
Supply outlet	65
Exhaust inlet	57
Exhaust outlet	66
Casing	44

A-weighted sound pressure level  $L_{pA}$ , dB(A)

10 m<sup>2</sup> normally isolated room, distance from casing – 3 m.

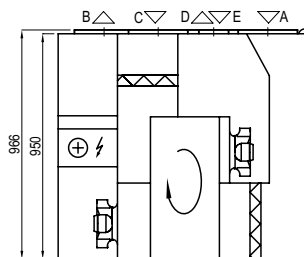
Surroundings	34
--------------	----

## Temperature efficiency

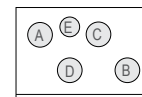
	Winter					Summer		
Outside temperature, °C	-23	-15	-10	-5	0	25	30	35
After heat exchanger, °C	14,0	15,4	16,3	17,2	18,1	22,5	23,4	24,3

indoor +22°C, 20 % RH

Shown as left (L1)



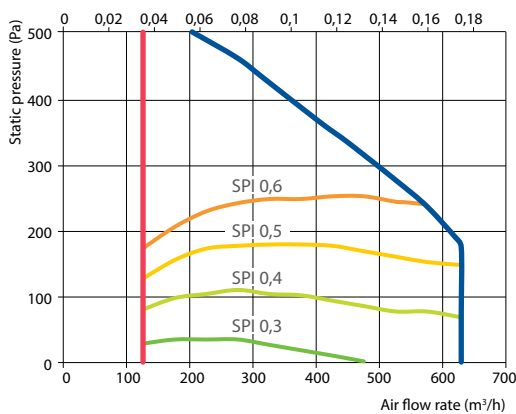
Shown as right (R1)



- A outdoor intake
- B supply air
- C extract indoor
- D exhaust air
- E additional extraction connection (by-pass – extraction without heat recovery)

## Performance

Unit with standard equipment



## Accessories (p. 118)

Closing damper	AGUJ-M-250+LF230/LM230	2-way valve (water heater)	VVP47.10-0,63
Silencer	A/D AGS-250-50-600-M	Water cooler	DCW-0,5-3 / DHCW-250
Water heater	B/C AGS-250-50-900-M	2-way valve (water cooler)	VVP47.15-2,5
PPU	DH-250	DX cooler	DCF-0,5-3
	PPU-HW-3R-15-0,63-W1		